



HEBOFIX base for aluminium profiles

PRODUCT DESCRIPTION

The base for hook-and-loop fasteners with clamping foot serves as a gentle installation support of lines, cables and hoses on aluminium profiles.

The clamping foot can be assembled by a 90° turn into the rabbet of aluminium profiles or by pushing into a boring. After that the base can be assembled with our hook-and-loop tape in variable length.

ADVANTAGES

- // simple mounting without tools into popular aluminium profiles
- // variable length of the hook-and-loop tape, or already equipped with hook-and-loop tape

- // provides a tangle-free and protective cable installation
- // reusable
- // cable bundles can be extended easily
- // easy handling
- // reduced risk of injuries compared to use of cut off cable binders

TECHNICAL DATA

Material: polyamide, reinforced with glass fibre, self-extinguishing according to UL94-V0

ACCESSORIES

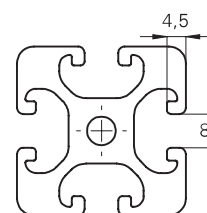
- // hook-and-loop tape on reel

MOUNTING PROCEDURE FOR HEBOFIX BASE FOR ALUMINIUM PROFILE



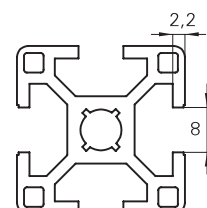


HEBOFIX BASE FOR ITEM-PROFILE WITH 8 MM-RABBET			
ITEM DESCRIPTION	ORDER NO.	DETAILED DESCRIPTION	PU
KBS-I8 4-20 10	3011-102	clamping range 4-20 mm, hook-and-loop tape 75 mm and 10 mm	10
KBS-I8 8-35 20	3011-104	clamping range 8-35 mm, hook-and-loop tape 20 mm	10
KBS-I8 10-60 20	3011-106	clamping range 10-60 mm, hook-and-loop tape 20 mm	10



HEBOFIX BASE FOR ITEM-PROFILE WITH 8 MM-RABBET, EQUIPPED WITH HOOK-AND-LOOP TAPE			
ITEM DESCRIPTION	ORDER NO.	DETAILED DESCRIPTION	PU
KBS-I8 4-20 10	3011-102-150	clamping range 4-20 mm, hook-and-loop tape 150 x 10 mm	10
KBS-I8 8-35 20	3011-104-180	clamping range 8-35 mm, hook-and-loop tape 180 x 20 mm	10
KBS-I8 10-60 20	3011-106-200	clamping range 10-60 mm, hook-and-loop tape 200 x 20 mm	10

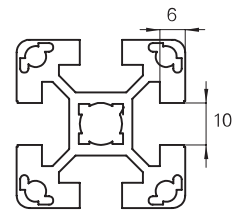
HEBOFIX BASE FOR BOSCH-PROFILE WITH 8 MM-RABBET			
ITEM DESCRIPTION	ORDER NO.	DETAILED DESCRIPTION	PU
KBS-B8 4-20 10	3011-112	clamping range 4-20 mm, hook-and-loop tape 75 mm and 10 mm	10
KBS-B8 8-35 20	3011-114	clamping range 8-35 mm, hook-and-loop tape 20 mm	10
KBS-B8 10-60 20	3011-116	clamping range 10-60 mm, hook-and-loop tape 20 mm	10



HEBOFIX BASE FOR BOSCH-PROFILE WITH 8 MM-RABBET, EQUIPPED WITH HOOK-AND-LOOP TAPE			
ITEM DESCRIPTION	ORDER NO.	DETAILED DESCRIPTION	PU
KBS-B8 4-20 10	3011-112-150	clamping range 4-20 mm, hook-and-loop tape 150 x 10 mm	10
KBS-B8 8-35 20	3011-114-180	clamping range 8-35 mm, hook-and-loop tape 180 x 20 mm	10
KBS-B8 10-60 20	3011-116-200	clamping range 10-60 mm, hook-and-loop tape 200 x 20 mm	10

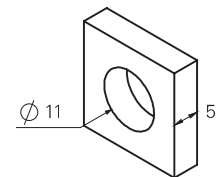


HEBOFIX BASE FOR BOSCH-PROFILE WITH 10 MM-RABBET			
ITEM DESCRIPTION	ORDER NO.	DETAILED DESCRIPTION	PU
KBS-B10 4-20 10	3011-122	clamping range 4-20 mm, hook-and-loop tape 75 mm and 10 mm	10
KBS-B10 8-35 20	3011-124	clamping range 8-35 mm, hook-and-loop tape 20 mm	10
KBS-B10 10-60 20	3011-126	clamping range 10-60 mm, hook-and-loop tape 20 mm	10



HEBOFIX BASE FOR BOSCH-PROFILE WITH 10 MM-RABBET, EQUIPPED WITH HOOK-AND-LOOP TAPE			
ITEM DESCRIPTION	ORDER NO.	DETAILED DESCRIPTION	PU
KBS-B10 4-20 10	3011-122-150	clamping range 4-20 mm, hook-and-loop tape 150 x 10 mm	10
KBS-B10 8-35 20	3011-124-180	clamping range 8-35 mm, hook-and-loop tape 180 x 20 mm	10
KBS-B10 10-60 20	3011-126-200	clamping range 10-60 mm, hook-and-loop tape 200 x 20 mm	10

HEBOFIX BASE FOR EGT-PROFILE WITH 11 MM-BORING			
ITEM DESCRIPTION	ORDER NO.	DETAILED DESCRIPTION	PU
KBS-EGT 4-20 10	3011-132	clamping range 4-20 mm, hook-and-loop tape 75 mm and 10 mm	100
KBS-EGT 8-35 20	3011-134	clamping range 8-35 mm, hook-and-loop tape 20 mm	100
KBS-EGT 10-60 20	3011-136	clamping range 10-60 mm, hook-and-loop tape 20 mm	100



HEBOFIX BASE FOR EGT-PROFILE WITH 11 MM-BORING, EQUIPPED WITH HOOK-AND-LOOP TAPE			
ITEM DESCRIPTION	ORDER NO.	DETAILED DESCRIPTION	PU
KBS-EGT 4-20 10	3011-132-150	clamping range 4-20 mm, hook-and-loop tape 150 x 10 mm	100
KBS-EGT 8-35 20	3011-134-180	clamping range 8-35 mm, hook-and-loop tape 180 x 20 mm	100
KBS-EGT 10-60 20	3011-136-200	clamping range 10-60 mm, hook-and-loop tape 200 x 20 mm	100